



# **“Supporting Our Troop’s Families: The Impact of Family Violence on Military Families”**

**National Health Collaborative on Violence and Abuse  
Webinar - January 21, 2014**

**Katherine Robertson, LCSW  
Department of Defense  
Family Advocacy Program Manager**



# Conflict of Interest Disclosure

All speakers have no real or apparent conflicts of interest to report



# Agenda

- Family Advocacy Program scope, mission, and goals
- Definitions
- Current research and pending initiatives
- Risk assessment and strategies for prevention and management of risk of family violence



# Scope and Mission

The Family Advocacy Program is a DoD program designated to address child abuse/neglect and domestic abuse in military families

Serves persons eligible for treatment in a military medical treatment facility:

- Active duty personnel
- Reserve duty personnel when on federal active duty
- Retirees
- Enrolled family members
- Eligible former spouses and current and former intimate partners

Located at every stateside and overseas installation where families are sponsored



# Family Advocacy Program Goals

- Promote prevention, early identification, reporting, and treatment of child abuse and domestic abuse
- Strengthen family functioning in a manner that increases the competency and self-efficacy of military families
- Preserve families in which abuse has occurred, if possible, without compromising the health, welfare, and safety of victims
- Provide effective treatment for all Service members and family members when appropriate



# Family Advocacy Program Goals

- Support victims with trained domestic abuse victim advocates to include a full range of support services, such as safety planning, court accompaniment and information on civilian and military protective orders
- Collaborate with state and local civilian social services and law enforcement agencies to provide a coordinated community response and support for service members and their families



# DoD Stance on Child Abuse and Neglect and Domestic Abuse

Child abuse and neglect and domestic abuse/intimate partner violence are serious public health issues

- Family violence negatively impacts families and mission readiness
- DoD uses a Coordinated Community Response approach towards addressing family violence; all key organizations have a role and responsibility to both prevent and respond (command, medical, law enforcement, legal, FAP...)
- Increased focus on prevention – stopping the violence before it starts, breaking the cycle, eliminating causes, addressing risk factors, promoting protective factors
- Impact of war, reunification of families, drawdown of force may impact DoD future rates of family violence



# Coordinated Community Response for Child Abuse and Neglect and Domestic Abuse







# DoD Definition of Child Abuse

The physical or sexual abuse, emotional abuse, or neglect of a child by a parent, guardian, foster parent, or by a caregiver, whether the caregivers is intrafamilial or extrafamilial, under circumstances indicating the child's welfare is harmed or threatened.

Such acts by a sibling, other family member, or other person shall be deemed to be child abuse only when the individual is providing care under express or implied agreement with the parent, guardian, or foster parent.



# DoD Definition of Domestic Violence

An offense under the U.S. Code, the Uniform Code of Military Justice (UCMJ), or state law:

- (1) involving the use, attempted use, or threatened use of force or violence or
- (2) a violation of a lawful order issued for the protection of the victim, who is:
  - (a) a current or former spouse;
  - (b) a person with whom the abuser shares a child in common; or
  - (c) a current or former intimate partner with whom the abuser shares or has shared a common domicile



# DoD Definition of Domestic Abuse

- (1) Domestic violence, or
- (2) A pattern of behavior resulting in emotional/psychological abuse, economic control, and/or interference with personal liberty that is directed toward a person who is:
  - (a) a current or former spouse,
  - (b) a person with whom the abuser shares a child in common, or
  - (c) a current or former intimate partner with whom the abuser shares or has shared a common domicile



# Distinctions in DV & DA

## Domestic Violence

- A criminal offense under UCMJ
- Always involves law enforcement
- Offenses reported in a criminal data base
- Offenses may be prosecuted under several enumerated offenses (for example, Article 128, Assault)

## Domestic Abuse

- Includes domestic violence and emotional abuse/maltreatment
- Defined by the domestic relationship between a victim and offender
- Frequently does not meet threshold for a UCMJ offense
- Offense reported in a DoD central registry



# Scope of IPV Abuse in Military Families

## Situational Couple Violence/ Common Couple Violence

## Intimate Partner Violence

## Intimate Partner Terrorism

### Either/mutual

Insults and accusations  
Pushing/shoving  
Less severe assaults

Immaturity  
Stress (\$)  
Alcohol  
Infidelity

### Males

Insults/belittling  
Threats  
Assaults  
Property damage

Mental Health problems  
Personality disorder  
Impulse control  
Alcoholism

### Males

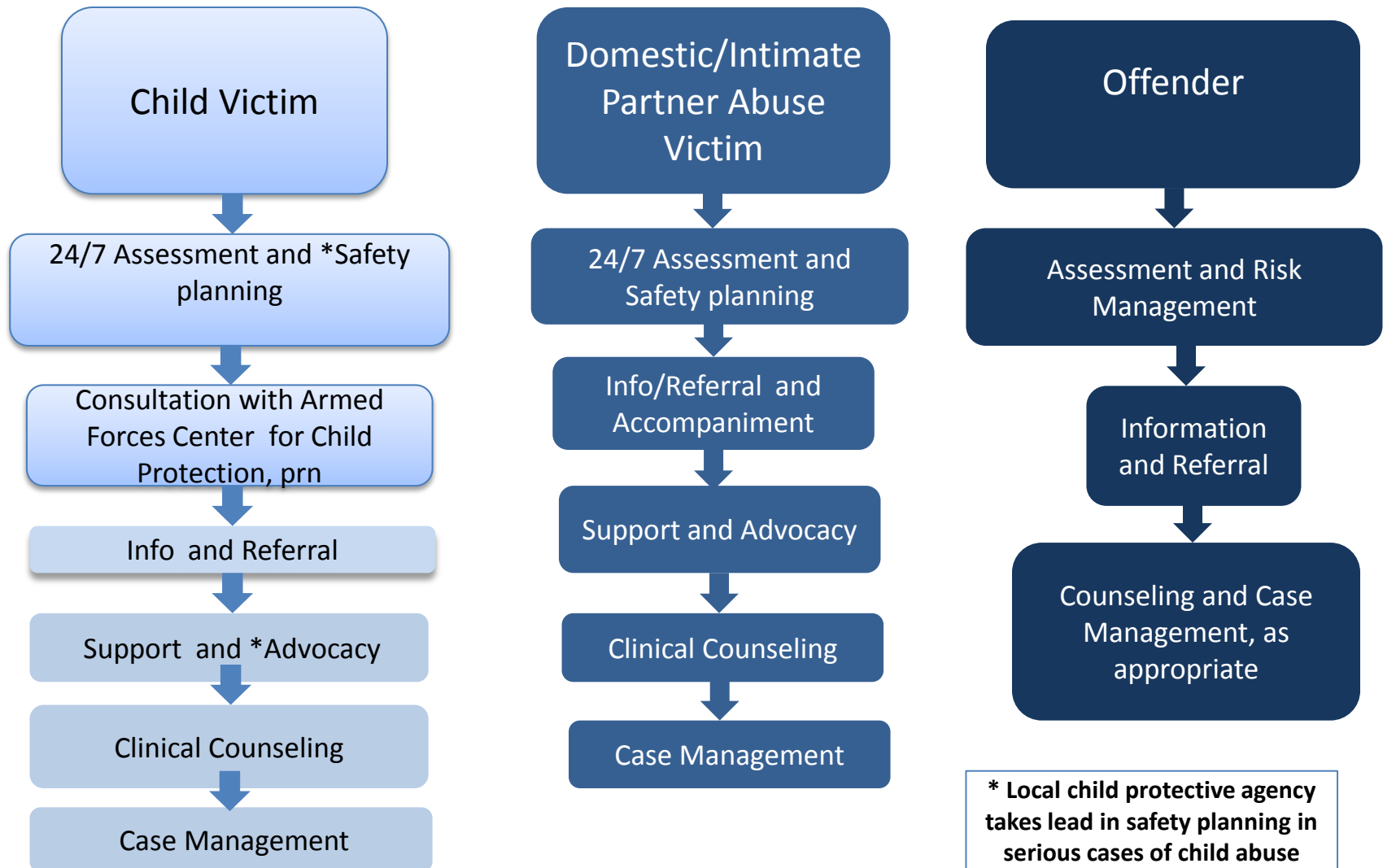
Confinement  
Threats and stalking  
Property destruction  
Severe assaults  
Sexual assault

Misogyny  
Mental health problems  
Personality disorder  
Alcoholism

\*\*Note: Scale is a representation of context of abuse and not of severity rates.



# FAP Capability Response and Services





# Current DoD Research

Center's for Disease Control National Intimate Partner and Sexual Violence Study – Military Report released March 2013

## **FY2010 sample**

- General Population:
  - 9,086 women
- Military Population: 2,836 women
  - 1,408 active duty women
  - 1,428 wives of active duty men



# Prevalence – CDC’s National Intimate Partner and Sexual Violence Study

## Results:

- General Population: ~ 4 in 10 women
- Active Duty: ~1 in 3 women\*
- Wives of Active Duty Men: ~1 in 3 women

\* Active duty women were significantly less likely to report experienced physical violence, rape, or stalking by an intimate partner in their lifetime compared to women in the general population

## Summary:

- Intimate partner violence, sexual violence and stalking are widespread among women in the general U.S. population and in the military
- The prevalence in the military is similar to what is observed in the general population
- This report provides the first simultaneous and consistent data for the military





# Current DoD Research

- Military Service Family Advocacy Programs sponsor specific studies on military family violence
- DoD FAP has requested Defense Centers of Excellence research and support:
  - Retrospective Cohort Study of Domestic Violence Among Military Service Members, 2003-2010 (pending release)
  - Literature Reviews on : Intervening & providing treatment for Interpersonal Violence (IPV) by Young (ages 18-35) Female Perpetrators and the Prevalence, Risk Factors, Assessment for IPV in Same-Sex couples (pending release)

Both will inform policy and practice



# DoD Research-Based Initiatives

- FAP implemented standardized maltreatment definitions and a decision tree algorithm that was implemented Department-wide in 2010 to be used in the case review/Incident Determination Committee process
- In FY14/15, FAP will implement:
  - Severity Scales Decision Tree and training to standardize how the services determine the severity of incidents of maltreatment
  - Risk Assessment Tool – a 15-item clinical assessment instrument to assess the risk of subsequent physical violence by alleged domestic abuse offenders. The tool incorporates victim, offender, relationship and military-specific risk factors



# FAP Risk Assessment and Strategies for Prevention and Management of Risk of Family Violence in Military Families



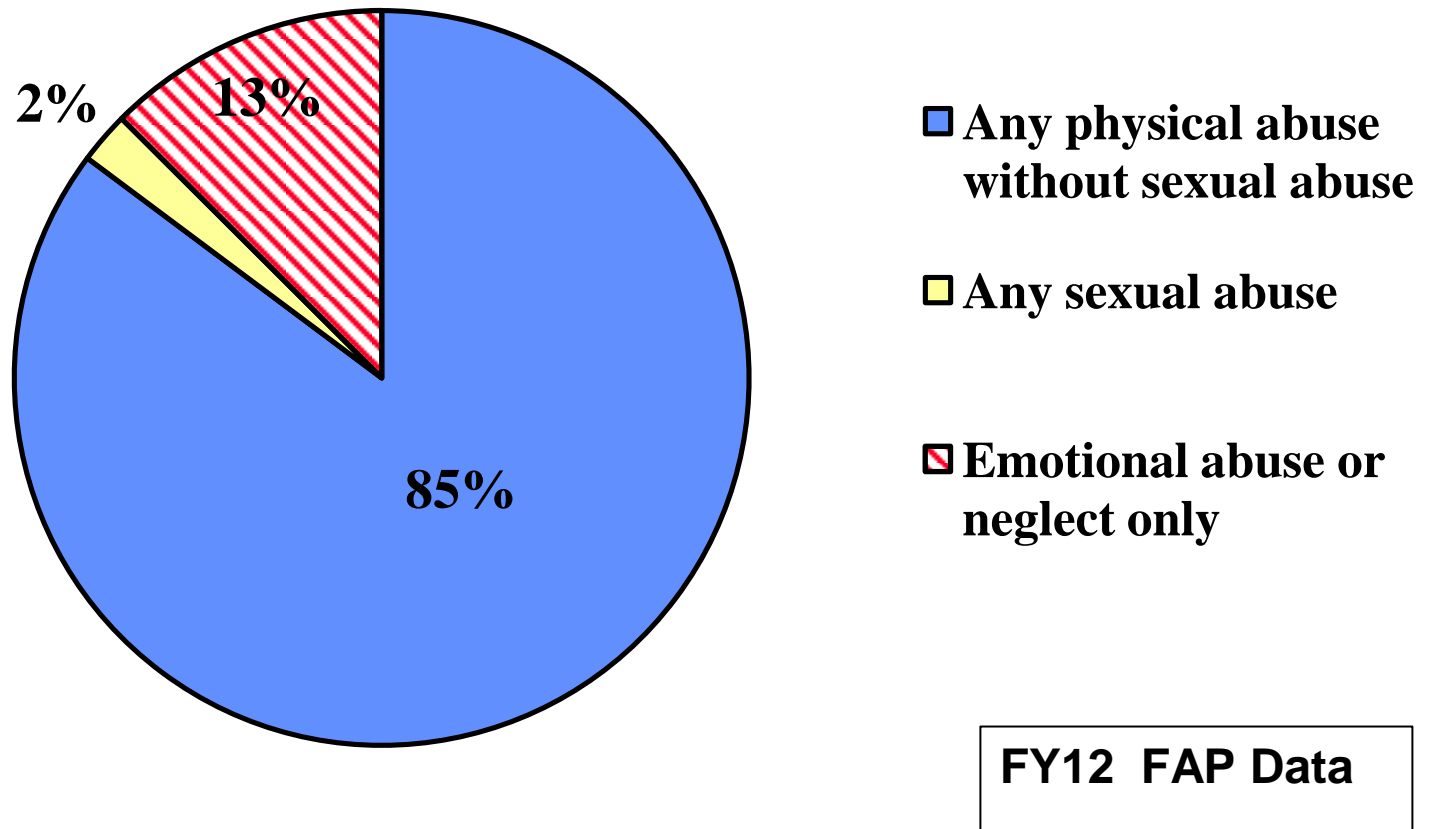
# FY 01-12 Spouse Abuse

Year	Incidents	Victims	Couples	Incidents Per 1,000 Couples	Victims Per 1,000 Couples
FY01	10,967	9,351	664,701	16.5	14.1
FY02	10,546	9,159	682,656	15.4	13.4
FY03	9,845	8,610	694,527	14.2	12.3
FY04	9,434	8,467	698,160	13.5	12.1
FY05	8,306	7,538	702,727	11.8	10.7
FY06	7,586	7,047	707,895	10.7	9.9
FY07	7,257	6,707	708,178	10.2	9.5
FY08	6,767	6,299	718,526	9.4	8.7
FY09	7,467	6,834	738,067	10.1	9.3
FY10	8,411	7,618	751,758	11.2	10.1
FY11	8,386	7,485	753,110	11.1	9.9
<b>FY12</b>	<b>8,345</b>	<b>7,422</b>	<b>734,308</b>	<b>11.4</b>	<b>10.1</b>

*\*Abuse includes acts of physical violence, and/or sexual violence, and/or emotional abuse, and/or neglect*

*\*\*Reports represent # incidents of abuse; 1 or more reports may be submitted on a single victim.*

# Types of Spouse Abuse in 'Met Criteria' Incidents

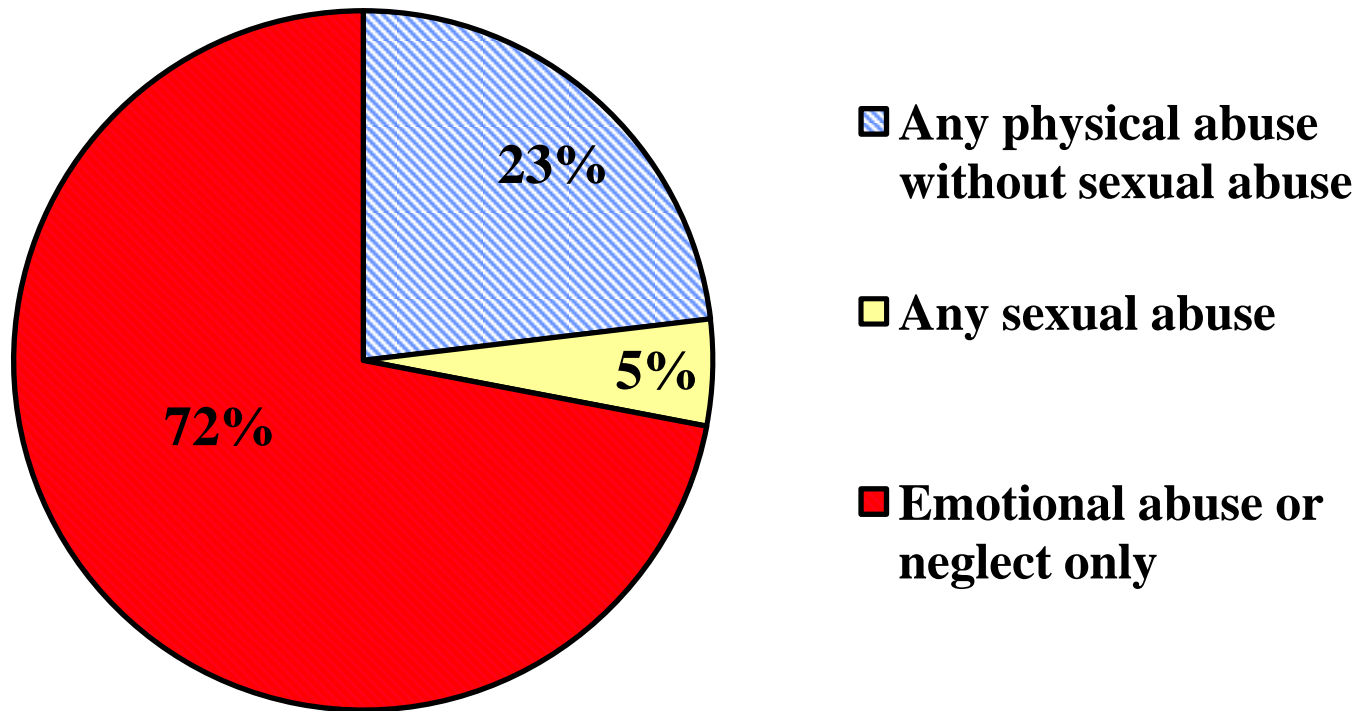




# FY01-12 CAN

Year	Incidents	Victims	Children	Rate Per 1,000 Children	Victims Per 1,000 Children
FY01	7,612	6,496	1,127,492	6.8	5.8
FY02	7,556	6,596	1,145,001	6.6	5.8
FY03	7,463	6,538	1,149,764	6.5	5.7
FY04	7,881	7,152	1,120,590	7.0	6.4
FY05	6,178	5,555	1,104,716	5.6	5.0
FY06	5,603	5,009	1,103,362	5.1	4.5
FY07	5,434	4,951	1,103,270	4.9	4.5
FY08	5,406	4,857	1,122,098	4.8	4.3
FY09	5,499	4,944	1,147,318	4.8	4.3
FY10	6,633	5,560	1,166,079	5.7	4.7
FY11	6,819	5,994	1,165,812	5.8	5.1
<b>FY12</b>	<b>7,003</b>	<b>6,123</b>	<b>1,140,024</b>	<b>6.1</b>	<b>5.4</b>

# Type of CAN in Met Criteria Incidents



FY12 FAP Data



# New Parent Support Program Secondary Prevention Program

- Intensive home visitation program
- Evidence-informed interventions
- Offered to expectant parents and parents of children ages 0-3 years
- Services are voluntary



- Promotes protective factors associated with decreasing the risk for child abuse and neglect

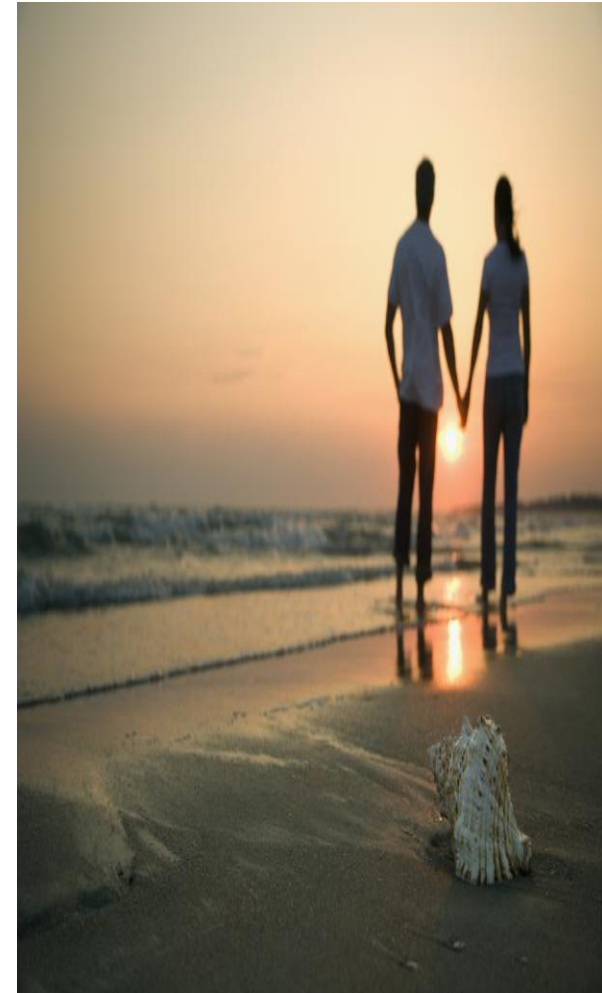


# Counseling Services



## SECONDARY PREVENTION (at risk)

- Counseling for Individuals, Couples and Parents
- Life Skills Classes  
(for example, anger management, stress management, and parenting)
- Military and Family Life Counselors
- Military OneSource





# FAP Intervention Services

## When abuse occurs....

- More than 900 DoD FAP licensed clinical providers available to provide treatment and case management
- Access to medical care, advocacy and clinical counseling for victims
- Clinical treatment for offenders (concurrent substance abuse, mental health services, as needed)
- Commanders may mandate treatment for active duty offenders
- Active duty victims and civilian offenders participate voluntarily
- Services for children, as appropriate
- Referral to civilian community services, if appropriate
- Option for restricted reporting



# FAP Focus on Prevention

- Developed a five-year strategic plan for FAP prevention in conjunction with federal partners (CDC, HHS Children's Bureau, Family Violence Services)
- Increased comprehensive cross-systems/cross program prevention efforts to reduce family violence and provide effective interventions
- Adoption of approaches for prevention and intervention that are evidence-based, culture and gender sensitive, and applicable to the military population



# FAP Focus on Prevention

- Targeted efforts to address post deployment stressors and family reunification
- Train spouses on “warning signs” of depression, PTSD and TBI
- Identify and promote protective factors for improving parent/child bonds and intimate partner relationships
- Pre-deployment support services for families
- Provide education to normalize re-adjustment and reunification stressors



# DoD Focus on Prevention

- In September 2013 – senior DoD leadership established “The Prevention and Coordinated Community Response to Child Abuse and Neglect and Domestic Abuse/Intimate Partner Violence Working Group”
- Working Group’s mission is to provide a priority rapid review of Department of Defense processes with all key stakeholders: including medical, legal, law enforcement, FAP, command....



# Questions

Kathy Robertson, LSCW

FAP Manager

OASD, Family Advocacy Program

571-372-5350

*katherine.e.robertson8.civ@mail.mil*